



OHIO IS ON
THE ROAD BACK

AND OUR LONG-TERM CARE PROVIDERS ARE LEADING THE WAY

Save lives. Build your immunity. Get vaccinated.

WELCOME



coronavirus.ohio.gov



Ohio | Department of Aging

*Fostering sound public policy, research,
and initiatives that benefit older Ohioans.*

Ursel J. McElroy
Director

Visitation



coronavirus.ohio.gov

Visitation

Amended Director's Order to Permit Access to Ohio's Residential Care Facilities, with Exceptions – *effective March 22, 2021*

Rescinded Order



Department
of Health

Mike DeWine, Governor
Jon Husted, Lt. Governor

Stephanie McCloud, Director

AMENDED DIRECTOR'S ORDER

Re: Amended Director's Order to Permit Access to Ohio's Residential Care Facilities, with Exceptions

I, Stephanie McCloud, Director of the Ohio Department of Health (ODH) pursuant to the authority granted to me in R.C. 3701.13 and R.C. Chapter 3721, to prevent the spread of contagious or infectious diseases, hereby **ORDER** all Residential Care Facilities as defined in R.C. 3721.01 the following:

1. Since the release of the last Order, millions of vaccinations have since been administered to residential care facility residents and staff, and these vaccines have been shown to help prevent COVID-19 infection. In support of Ohio's continued commitment to provide vaccination to all older adults, recognition of the importance of safely reuniting families to combat isolation caused by the COVID-19 pandemic, and of providing opportunities for social interaction to improve overall health and well-being, this Order shall replace all prior Orders regarding visitation in Ohio's residential care facilities (hereafter RCF or facility). Accordingly, it shall permit access to personnel who are necessary for the operations of RCFs and permit access to visitors in the limited circumstances set forth below.
2. Personnel who are necessary for the operations of the RCFs include, but may not be limited to, staff, contracted and emergency healthcare providers, hospice personnel providing core services, clergy, hair salon personnel, contractors conducting critical on-site maintenance, and governmental representatives and regulators and their contractors. Governmental representatives include employees of the Secretary of State, local Boards of Election, and precinct election officials. No visitors of residents shall be admitted to any RCF, except for as explained below.
3. All individuals and personnel must be screened for COVID-19 each time they enter the facility. Screening guidance is available from the U.S. Centers for Disease Control and Prevention (CDC) and Centers for Medicare and Medicaid Services (CMS) as well as from ODH. Per the CDC, screening should include questions about exposure to COVID-19 and assessing the visitors and personnel for cough, shortness of breath, and body temperature of 100.0 degrees Fahrenheit or higher. This Order does not apply to exigent circumstances, to emergency medical services first responders, and similarly-situated individuals.
4. RCFs should attempt to have as few of points of entry as possible. ODH recommends that RCFs, where possible, have a designated entry point. This does not apply to emergency ingress or egress of the facilities.
5. Individuals granted access to an RCF should provide the RCF with name and contact information. It is the responsibility of RCFs to log each visitor including telephone number and address. The

Visitation

Director's Order Rescinding Various Orders – *effective June 18, 2021*

Rescinded
Order

Ohio | Department of Health

Mike DeWine, Governor
Jon Husted, Lt. Governor

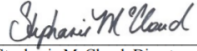
Stephanie McCloud, Director

DIRECTOR'S ORDER

Re: Director's Order Rescinding Various Orders

I, Stephanie McCloud, Director of the Ohio Department of Health (ODH), pursuant to the authority granted to me in R.C. 3701.13 to "make special orders...for preventing the spread of contagious or infectious diseases" **Order** the following:

1. The Amended Director's Order to Permit Access to Ohio's Residential Care Facilities, with Exceptions March 22, 2021 is rescinded.
2. The Director's Seventh Amended Order to Permit Access to Ohio's Nursing Homes, with Exceptions signed March 22, 2021 is rescinded.
3. This Order shall be effective at 12:01 p.m. on June 18, 2021.


Stephanie McCloud, Director

June 17, 2021
Date

246 North High Street
Columbus, Ohio 43215 U.S.A. 614 | 466-3543
www.odh.ohio.gov

The State of Ohio is an Equal Opportunity Employer and Provider of ADA Services.

Visitation

Opening the doors safely

- Visitation can be conducted through different means **based on a facility's structure and residents' needs**
- Core principles consistent with the CDC guidance for nursing homes should be **adhered to at all times**



Visitation

Core Principles

- Screen all who enter the facility for COVID-19
- Hand hygiene
- Face covering or mask
- Social distancing at least six feet
- Instructional signage
- Cleaning and disinfecting high-touch surfaces
- Appropriate staff use of PPE
- Effective cohorting of residents
- Resident and staff testing conducted as required

Visitation

CDC Guidance

[Interim Infection Prevention and Control Recommendations to Prevent SARS-CoV-2 Spread in Nursing Homes](#)

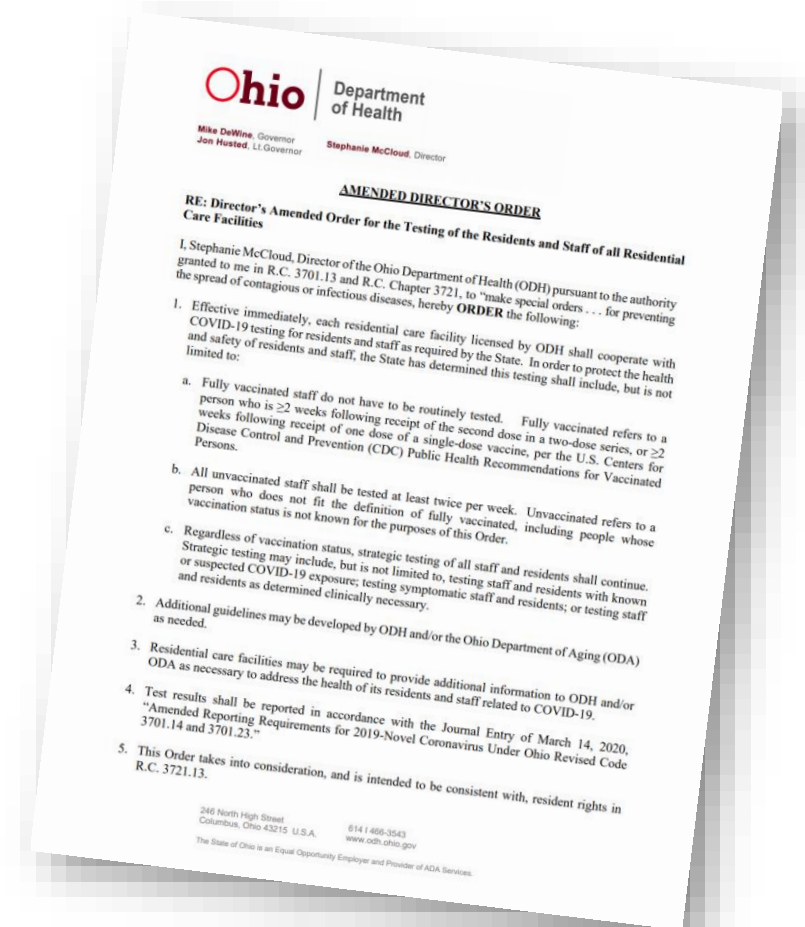
[Updated Healthcare Infection Prevention and Control Recommendations in Response to COVID-19 Vaccination](#)

Testing

Testing

Effective May 4, 2021

- **Vaccinated staff** are not required to routine test
- **Unvaccinated staff** are required to routine test at least twice per week
- **Regardless of vaccination status**, strategic testing of staff and residents shall continue
 - Exposure
 - Symptomatic
 - Clinically necessary



Vaccination Status

Fully vaccinated refers to a person who is:

- \geq two weeks following receipt of the second dose in a two-dose series
- \geq two weeks following receipt of one dose of a single-dose vaccine

Unvaccinated refers to a person who:

- Does not fit the definition of “fully vaccinated”
- Includes people whose vaccination status is not known

Testing

- Alternating PCR and rapid antigen test
- Rapid antigen test only
- PCR test only
- No state support



COVID-19 Care Center



Learn
ABOUT US

See
NEWS & EVENTS

Explore
CARE & LIVING

For Agencies & Service
PROVIDERS

Find
SERVICES

Help

Search

Aging / Care & Living



Care & Living

Coronavirus

Get Help

Health & Safety

Staying Active

Caregiver Support

The Road Back: COVID-19 Resources for Congregate Settings

Information and resources to help congregate
care setting providers maintain safe
operations.

Read More



THE ROAD BACK



The Ohio Department of Aging works with state and local partners to support Ohioans throughout their lives. We all age differently, but we know that the choices you make throughout your life have a bigger impact on how you age than genetics. Here you will find information, resources, and programs to help you live safely in your home and community, create a safe environment for yourself and others, stay active, and contribute. We also support Ohioans who are taking care of older loved ones and neighbors.

THE ROAD
BACK



MIKE DEWINE
GOVERNOR OF OHIO



Department of
Aging



Department of
Health

coronavirus.ohio.gov

COVID-19 Care Center

Login

Login


If there are any questions you have along the way, just send us an email


? Any questions? Click here

COVID-19 Care Center

COVID-19 Care Center

Welcome to the COVID-19 Care Center.

Facility Profile

You have not updated your profile since last 30 days.

Weekly Reporting

Your reporting is up to date.

Testing Program Selection
Current Status : Opt In-PCR
Lab Name : Mako

Vaccine Program Selection
Current Status : Opt In
Pharmacy: Pharmerica Westlake

Vaccine Maintenance Program
Next scheduled Clinic date:
06/30/2021

[Main Menu](#)
[Facility Profile](#)
[RCF Weekly Reporting Tool](#)
[Testing Program Selection](#)
[Vaccine Program Selection](#)
[Vaccine Program Portal](#)
[Vaccine Dashboard](#)

[Any questions? Click here](#)

Indicator that facility profile has not been updated in 30 days

Indicator that reporting is complete and submitted

Opt-in status and next clinic dates displayed here for quick reference

Quick link options to ease navigation

COVID-19 Care Center

Current opt in selection is displayed at the top of the page.

Testing program selection can be changed at any time.

You can change the preferred testing dates at any time.

Lab selections can be changed.

Save Reset

Any questions? Click here

Save your selections and receive an e-mail notification.

COVID-19 Care Center

Opt-in selection is displayed at the top of the page

Vaccine Maintenance program selection can be changed at any time

Vaccine Program Selection

Current status: **Opt-In**

Beginning in December 2020, phase 1A of Ohio's COVID-19 Vaccine Distribution Plan began and included residents and staff in nursing homes and assisted living facilities through the Federal Pharmacy Partnership for Long-Term Care (LTC) Program. Vaccine administration will move forward with a continued focus on reaching the critical groups most impacted by this pandemic. The COVID-19 Vaccine Maintenance Program for Nursing Homes and Assisted Living Facilities provides ongoing vaccination access to residents and staff who may be new hires, new intakes, and have recently chosen to get the vaccine. All facilities will be given the monthly opportunity to enroll into the COVID-19 Vaccine Maintenance Program for Nursing Homes and Assisted Living Facilities. Survey questions must be fully and accurately answered in order to successfully enroll.

1. Vaccine Maintenance Program Enrollment

Would the facility like to participate in the COVID-19 Vaccine Maintenance Program for Nursing Homes and Assisted Living Facilities?

- ☒ Yes, the facility would like to opt-in to the COVID-19 Vaccine Maintenance Program for Nursing Homes and Assisted Living Facilities preferably by using my current pharmacy provider.
- ☐ No, the facility is already coordinating with a local partner for vaccine needs (i.e. local health department, federally qualified health center, hospital system, etc.). No vaccine will be allocated for your facility from this program.
- ☐ No, the facility is would like to opt-out of the COVID-19 Vaccine Maintenance Program for Nursing Homes and Assisted Living Facilities. No vaccine will be allocated for your facility from this program.

[Facility Profile](#)

[Main Menu](#)

[Facility Profile](#)

[RCF Weekly Reporting Tool](#)

[Testing Program Selection](#)

[Vaccine Program Selection](#)

[Vaccine Program Portal](#)

[Vaccine Dashboard](#)

Save vaccine maintenance program selections; email notification follows



[Any questions? Click here](#)

COVID-19 Care Center

Reporting Introduction

Ohio COVID-19 Reporting Tool Director's Orders and Facility Type Per the Orders, all facilities (RCF) must ensure staff and residents/participants are tested for COVID-19, as applicable. Each facility is required to report the results of testing efforts using this online reporting tool. Reporting is required regardless of whether a facility is utilizing state-supported testing or chooses to use another laboratory. All questions in the reporting tool must be fully and accurately reported within each reporting period.

Additional information about RCF testing requirements can be found [here](#).

This reporting tool is to record testing performed on residents/participants and personnel necessary for the operations of the facilities to include, but not limited to staff, volunteers, contracted and emergency healthcare providers, and contractors who conduct critical on-site maintenance.

Reporting Period 06/14/2021 - 06/20/2021

RCF

1. For the current reporting period, is the facility in full compliance with the May 4th, 2021, [Amended Director's Order](#) for Residents and Staff of all Residential Care Facilities including having implemented policies and procedures for the implementation and monitoring of resident and staff COVID-19 testing?

- ☐ Yes
☐ No

2. Is the facility utilizing state-supported testing?

- ☐ a. Yes, the facility is utilizing the state-supported testing program.
☐ b. No, the facility is utilizing an alternative testing mechanism.

RCF Supply Inventory

RCF Resident Testing Details

RCF Vaccine Census Information

Vaccine Plan

Vaccine Provider Preference

Submitter Contact Info

Reset

Submit



Department of
Aging



Department of
Health



COVID-19 VACCINE MAINTENANCE PROGRAM

for Nursing Homes and
Assisted Living Facilities

Protecting Ohio's long-term care residents remains a top priority of vaccination efforts

BE SURE TO SIGN UP!

Regional Rapid Response Assistance Program - R³AP

John M. Weigand, MD

R³AP Chief Medical Officer



coronavirus.ohio.gov

“Oh...I am fine...”



FINE = Feelings Inside Not Expressed

How We Can End the Pandemic



1. Widespread acceptance of COVID-19 vaccination
2. Regular hand washing and hygiene
3. Wearing masks around the most vulnerable
4. Sanitizing hard surfaces

“Elementary School” Phase of the Pandemic





“College” Phase of the Pandemic



Regional Rapid Response Assistance Program R³AP



Services Provided

- COVID-19 Outbreak Mitigation
- Assist in Arranging for Monoclonal Antibody Infusion or Injection
- Testing Questions and Strategy
- Infection Prevention and Control Consultation
- Education in Vaccination Acceptance
- Answer COVID-19 Related Questions

Regional Rapid Response Assistance Program R³AP



Regional Medical Directors

Region 1 – Thomas Lehner, MD

Region 2 – Jessica Coleman, DO

Region 3 – Todd Sobol, MD

Region 4 – Stuart J. Kanter, DO

Region 5 – Brian McClain, MD

Region 6 – Richard Shonk, MD

Region 7 – Marla Haller, DO

Region 8 – Paul Mumma, DO

Regional Rapid Response Assistance Program

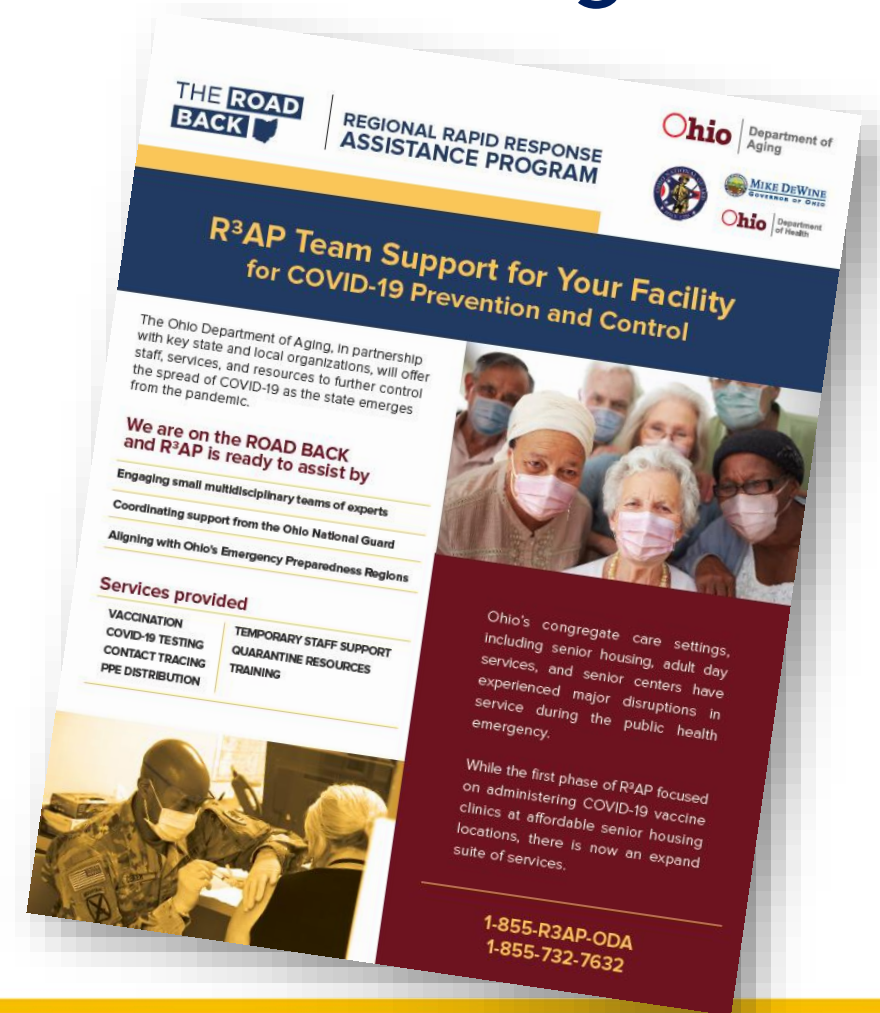
R³AP

Infection Prevention and Control Specialists

- Service provided by LeaderStat, a respected name in infection prevention
 - Can provide assistance in COVID outbreaks
 - Testing strategies
 - COVID policy review
 - Education and valuable resource for promoting vaccination acceptance

Regional Rapid Response Assistance Program R³AP

Call for assistance:
855-732-7632
855-R3AP-ODA



#IN THIS
TOGETHER 
Ohio